

# THE ASPEN



THE WOODLANDS  
LIGHTMOOR VILLAGE



## TWO BEDROOM SEMI-DETACHED HOME

The Aspen is a two bedroom semi-detached home that features a modern design perfect for couples and young families alike.

jessup



THE WOODLANDS  
LIGHTMOOR VILLAGE

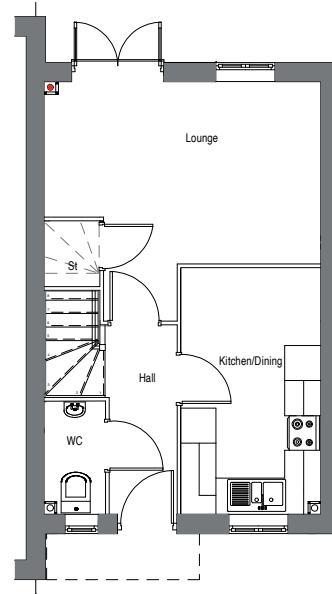
## THE ASPEN



01952 350178

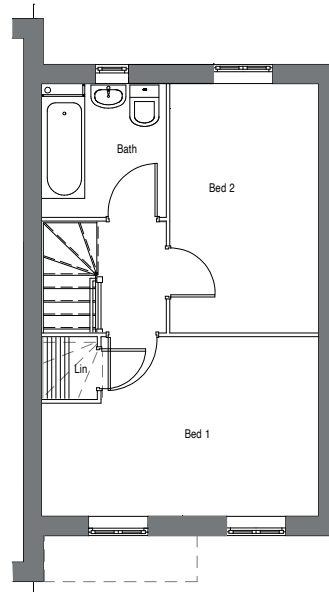
[jessuppartnerships.co.uk](http://jessuppartnerships.co.uk)

Wellington Road,  
Lightmoor Village,  
TF4 3FQ



### GROUND FLOOR

Lounge	4.76m x 4.12m	15' 7" x 13' 6"
Kitchen/Dining	4.24m x 2.41m	13' 11" x 7' 11"



### FIRST FLOOR

Bedroom 1	4.76m x 3.09m	15' 7" x 10' 2"
Bedroom 2	4.76m x 3.09m	14' 1" x 8' 4"
Bathroom	2.30m x 2.14m	7' 7" x 7' 0"

Disclaimer: Computer generated images, floor plans, configuration and layouts are purely indicative, intended for guidance only and should not be relied upon. External finishes may vary, please clarify with your Sales Advisor and refer to drawings in the sales office.

# THE BEECH



THE WOODLANDS  
LIGHTMOOR VILLAGE



## THREE BEDROOM SEMI-DETACHED HOME

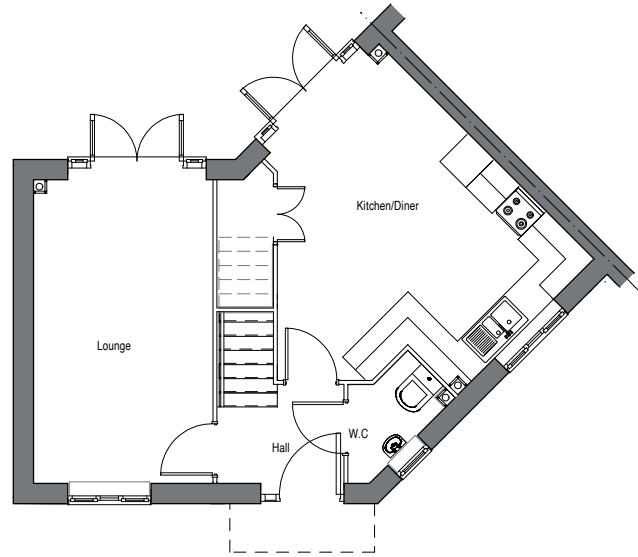
The Beech is a three bedroom semi-detached home with elegant modern style, perfect for a growing family.

jessup



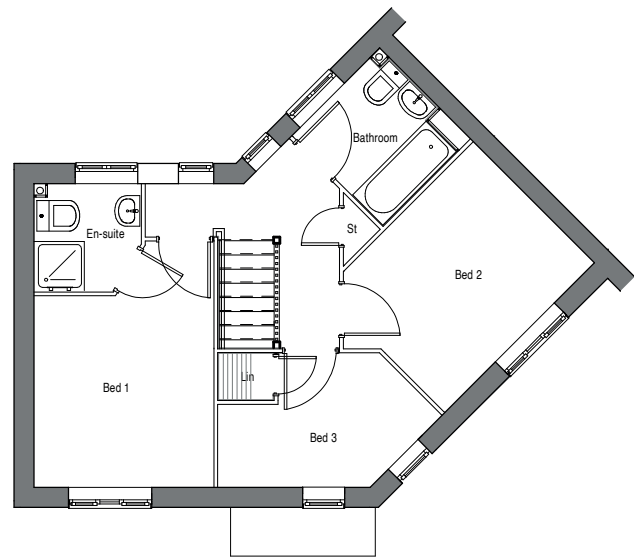


THE WOODLANDS  
LIGHTMOOR VILLAGE



## GROUND FLOOR

Lounge	4.96m x 2.93m	16' 3" x 9' 7"
Kitchen/Dining	5.06m x 4.96m	16' 7" x 16' 3"



## FIRST FLOOR

Bedroom 1	4.02m x 2.94m	13' 2" x 9' 8"
Bedroom 2	3.46m x 2.80m	11' 4" x 9' 2"
Bedroom 3	3.44m x 2.20m	11' 3" x 7' 3"
Bathroom	2.10m x 2.02m	6' 11" x 6' 8"
En-suite	1.77m x 1.75m	5' 10" x 5' 9"

Disclaimer: Computer generated images, floor plans, configuration and layouts are purely indicative, intended for guidance only and should not be relied upon. External finishes may vary, please clarify with your Sales Advisor and refer to drawings in the sales office.

jessup

01952 350178

[jessuppartnerships.co.uk](http://jessuppartnerships.co.uk)

Wellington Road,  
Lightmoor Village,  
TF4 3FQ

# THE CHERRY



THE WOODLANDS  
LIGHTMOOR VILLAGE



## THREE BEDROOM SEMI-DETACHED HOME

The Cherry is a three bedroom semi-detached home built to suit your everyday needs.

JESSUP



THE WOODLANDS  
LIGHTMOOR VILLAGE

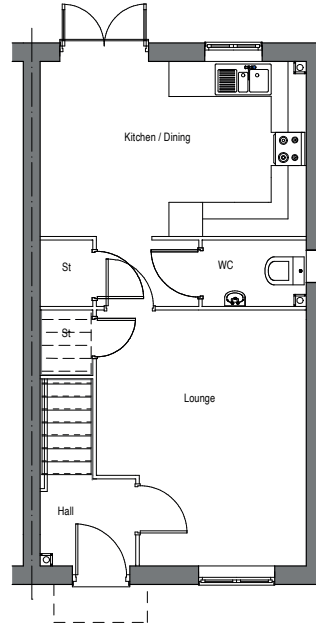
## THE CHERRY

  
jessup

01952 350178

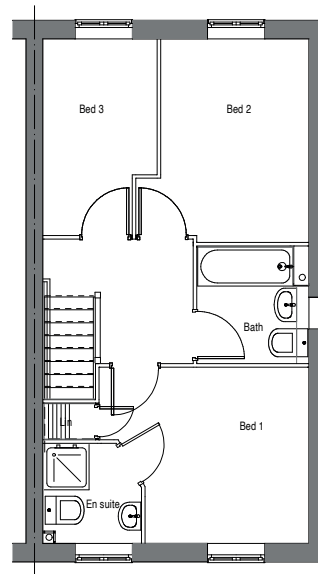
[jessuppartnerships.co.uk](http://jessuppartnerships.co.uk)

Wellington Road,  
Lightmoor Village,  
TF4 3FQ



### GROUND FLOOR

Lounge	4.57m x 3.75m	14' 12" x 12' 4"
Kitchen/Dining	4.75m x 3.13m	15' 7" x 10' 3"



### FIRST FLOOR

Bedroom 1	3.75m x 3.15m	12' 4" x 10' 4"
Bedroom 2	3.64m x 3.09m	11' 11" x 10' 2"
Bedroom 3	3.51m x 2.04m	11' 6" x 6' 8"
Bathroom	2.10m x 2.0m	6' 11" x 6' 7"
En-suite	1.79m x 1.76m	5' 10" x 5' 9"

Disclaimer: Computer generated images, floor plans, configuration and layouts are purely indicative, intended for guidance only and should not be relied upon. External finishes may vary, please clarify with your Sales Advisor and refer to drawings in the sales office.

# THE HAWTHORN



THE WOODLANDS  
LIGHTMOOR VILLAGE



## THREE BEDROOM DETACHED HOME

The Hawthorn is a stunning three bedroom detached home that has space and style throughout.



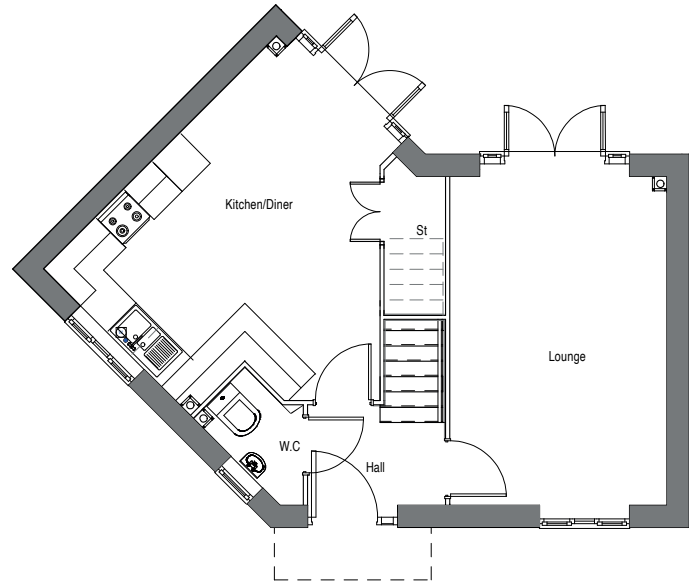
jessup





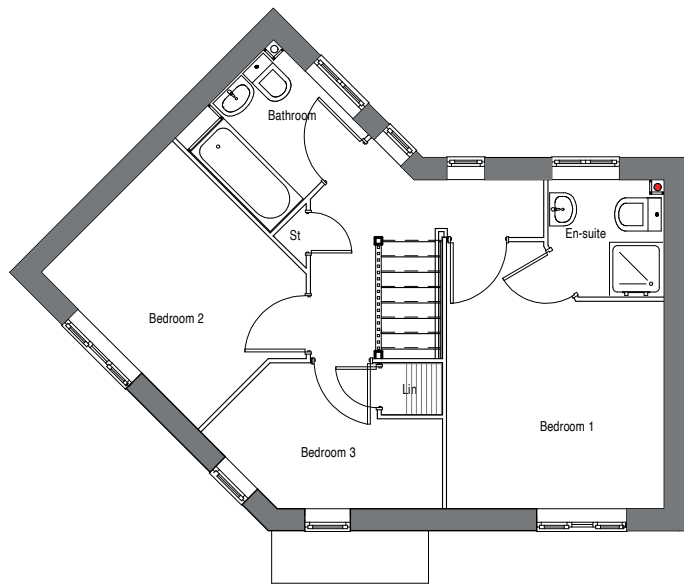
THE WOODLANDS  
LIGHTMOOR VILLAGE

## THE HAWTHORN



### GROUND FLOOR

Lounge	4.96m x 3.27m	16' 3" x 10' 9"
Kitchen/Dining	4.96m x 3.97m	16' 3" x 13' 0"



### FIRST FLOOR

Bedroom 1	4.02m x 3.28m	13' 2" x 10' 5"
Bedroom 2	3.34m x 2.80m	10' 11" x 9' 2"
Bedroom 3	3.63m x 2.20m	11' 11" x 7' 3"
Bathroom	2.10m x 2.02m	6' 11" x 6' 8"
En-suite	1.77m x 1.75m	5' 10" x 5' 9"

Disclaimer: Computer generated images, floor plans, configuration and layouts are purely indicative, intended for guidance only and should not be relied upon. External finishes may vary, please clarify with your Sales Advisor and refer to drawings in the sales office.

jessup

01952 350178

[jessuppartnerships.co.uk](http://jessuppartnerships.co.uk)

Wellington Road,  
Lightmoor Village,  
TF4 3FQ



# THE LARCH



THE WOODLANDS  
LIGHTMOOR VILLAGE



## FOUR BEDROOM DETACHED HOME

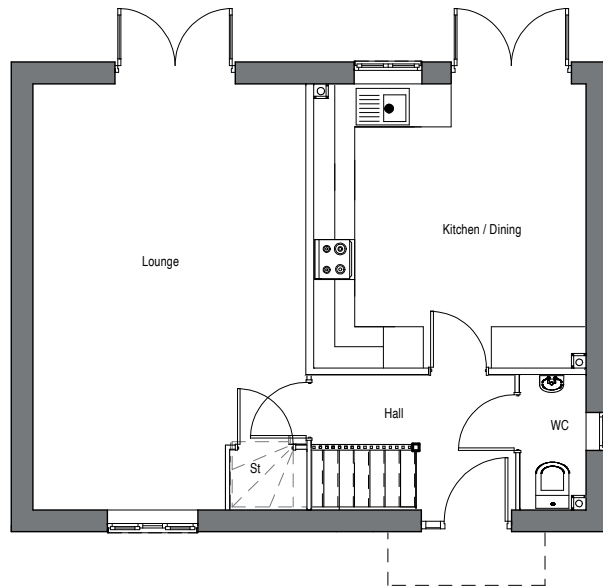
The Larch is a large four bedroom detached home with modern style and creative finishes.





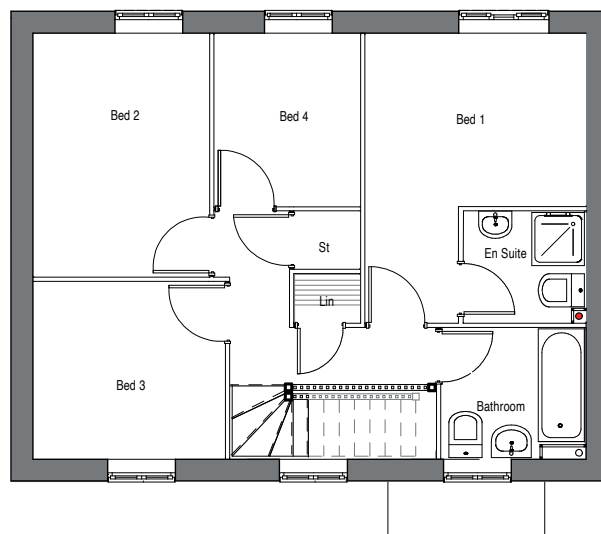
THE WOODLANDS  
LIGHTMOOR VILLAGE

## THE LARCH



### GROUND FLOOR

Lounge	6.42m x 4.11m	21' 0" x 13' 6"
Kitchen/Dining	4.28m x 4.10m	14' 0" x 13' 5"



### FIRST FLOOR

Bedroom 1	4.36m x 3.33m	14' 4" x 10' 11"
Bedroom 2	3.67m x 2.66m	12' 0" x 8' 9"
Bedroom 3	2.90m x 2.68m	9' 6" x 8' 10"
Bedroom 4	2.61m x 2.21m	8' 7" x 7' 3"
Bathroom	2.19m x 1.99m	7' 2" x 6' 6"
En-suite	1.85m x 1.69m	6' 1" x 5' 7"

Disclaimer: Computer generated images, floor plans, configuration and layouts are purely indicative, intended for guidance only and should not be relied upon. External finishes may vary, please clarify with your Sales Advisor and refer to drawings in the sales office.

jessup

01952 350178

[jessuppartnerships.co.uk](http://jessuppartnerships.co.uk)

Wellington Road,  
Lightmoor Village,  
TF4 3FQ

# THE LILAC



THE WOODLANDS  
LIGHTMOOR VILLAGE



## FOUR BEDROOM DETACHED HOME

The Lilac is a stylish four bedroom detached home offering the very best in modern day living.

JESSUP





THE WOODLANDS  
LIGHTMOOR VILLAGE

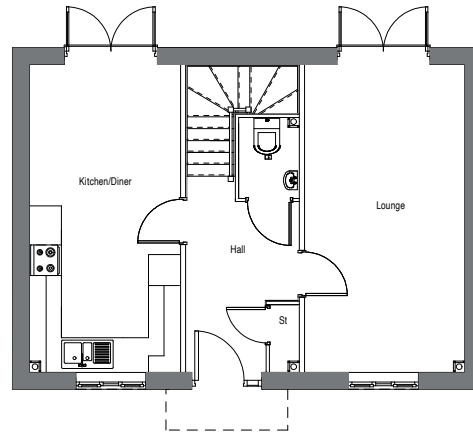
THE LILAC

  
jessup

01952 350178

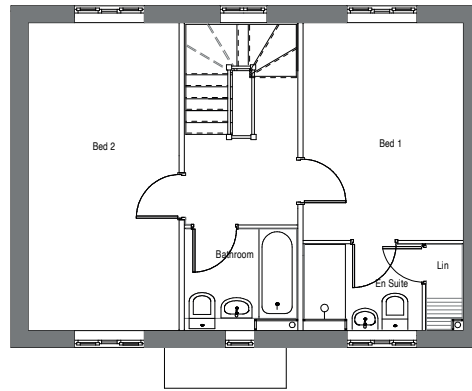
[jessuppartnerships.co.uk](http://jessuppartnerships.co.uk)

Wellington Road,  
Lightmoor Village,  
TF4 3FQ



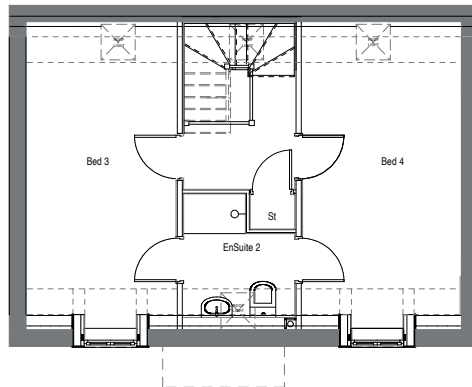
## GROUND FLOOR

Lounge	5.97m x 3.11m	19' 7" x 10' 2"
Kitchen/Dining	5.97m x 2.93m	19' 7" x 9' 7"



## FIRST FLOOR

Bedroom 1	4.22m x 3.11m	13' 10" x 10' 2"
Bedroom 2	5.97m x 2.93m	19' 7" x 9' 7"
Bathroom	2.20m x 1.98m	7' 3" x 6' 6"
En-suite	2.31m x 1.69m	7' 7" x 5' 7"



## SECOND FLOOR

Bedroom 3	5.97m x 2.93m	19' 7" x 9' 7"
Bedroom 4	5.97m x 3.11m	19' 7" x 10' 2"
En-suite	2.263m x 2.20m	8' 8" x 7' 3"

Disclaimer: Computer generated images, floor plans, configuration and layouts are purely indicative, intended for guidance only and should not be relied upon. External finishes may vary, please clarify with your Sales Advisor and refer to drawings in the sales office.



# THE MAPLE



THE WOODLANDS  
LIGHTMOOR VILLAGE



## FOUR BEDROOM DETACHED HOME

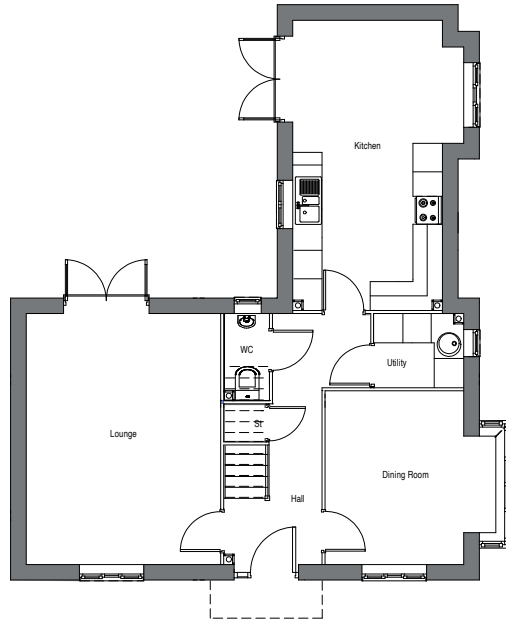
The Maple is a four bedroom detached home built to the highest quality.

JESSUP



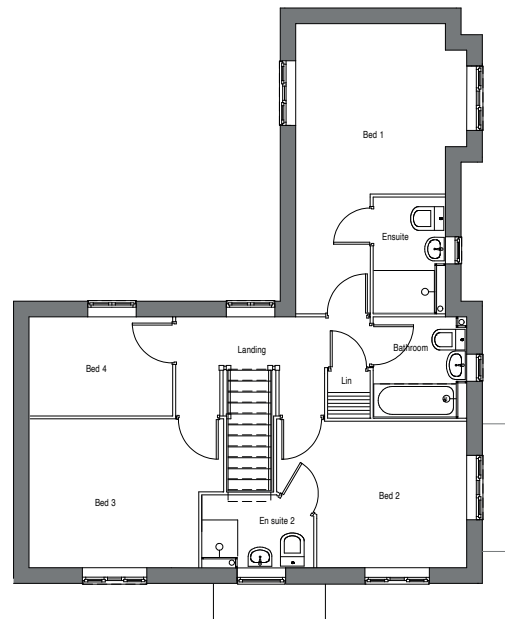
THE WOODLANDS  
LIGHTMOOR VILLAGE

## THE MAPLE



### GROUND FLOOR

Lounge	5.30m x 4.10m	17' 5" x 13' 5"
Kitchen	6.13m x 3.61m	20' 1" x 11' 10"
Dining Room	3.70m x 3.60m	12' 2" x 11' 10"



### FIRST FLOOR

Bedroom 1	6.13m x 3.61m	20' 1" x 11' 10"
Bedroom 2	4.01m x 3.14m	13' 2" x 10' 4"
Bedroom 3	4.09m x 3.14m	13' 2" x 10' 4"
Bedroom 4	3.02m x 2.09m	9' 10" x 6' 10"
Bathroom	2.14m x 1.98m	7' 0" x 6' 6"
En-suite	2.47m x 1.53m	8' 1" x 5' 0"
En-suite 2	2.36m x 1.54m	7' 9" x 5' 1"

Disclaimer: Computer generated images, floor plans, configuration and layouts are purely indicative, intended for guidance only and should not be relied upon. External finishes may vary, please clarify with your Sales Advisor and refer to drawings in the sales office.

jessup

01952 350178

[jessuppartnerships.co.uk](http://jessuppartnerships.co.uk)

Wellington Road,  
Lightmoor Village,  
TF4 3FQ